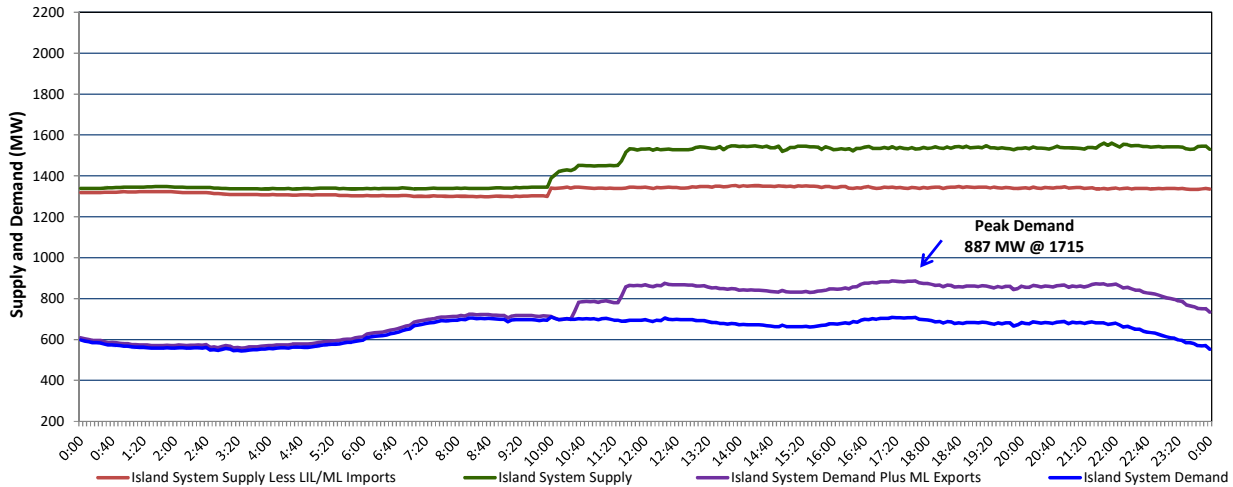


**Newfoundland Labrador Hydro (NLH)
Supply and Demand Status Report Filed Wednesday, June 28, 2023**

**Section 1
Island Interconnected System Supply, Demand & Exports
Actual 24 Hour System Performance For Tuesday, June 27, 2023**



Supply Notes For June 27, 2023

1,2

- A As of 0701 hours, March 06, 2023, Upper Salmon Unit unavailable (84 MW).
- B As of 0006 hours, April 09, 2023, Holyrood Unit 3 unavailable due to planned outage (150 MW).
- C As of 1600 hours, May 15, 2023, Holyrood Unit 1 available but not operating (170 MW).
- D As of 0800 hours, May 21, 2023, Holyrood Unit 2 unavailable due to planned outage (170 MW).
- E As of 1751 hours, May 24, 2023, Bay d'Espoir Unit 5 unavailable due to planned outage (76.5 MW).
- F As of 1407 hours, June 18, 2023, Granite Canal Unit unavailable due to planned outage (40 MW).

**Section 2
Island Interconnected Supply and Demand**

Wed, Jun 28, 2023	Island System Outlook ³		Seven-Day Forecast	Temperature (°C)		Island System Daily Peak Demand (MW)	
				Morning	Evening	Forecast	Adjusted ⁷
Available Island System Supply: ⁵	1,545	MW	Wednesday, June 28, 2023	13	19	960	960
NLH Island Generation: ^{4,8}	1,000	MW	Thursday, June 29, 2023	20	20	695	695
NLH Island Power Purchases: ⁶	110	MW	Friday, June 30, 2023	19	17	730	730
Other Island Generation:	220	MW	Saturday, July 1, 2023	17	16	725	725
ML/LIL Imports:	215	MW	Sunday, July 2, 2023	18	16	735	735
Current St. John's Temperature & Windchill:	13 °C	N/A °C	Monday, July 3, 2023	17	18	775	775
7-Day Island Peak Demand Forecast:	960	MW	Tuesday, July 4, 2023	14	17	765	765

Supply Notes For June 28, 2023

3

- Notes:
- Generation outages for running and corrective maintenance are included. These are not unusual for power system operations. They generally do not impact customer supply. The power system operators schedule outages to system equipment whenever possible to coincide with periods when customer demands are low and sufficient supply reserves are available. However, from time to time equipment outages are necessary and reserves may be impacted.
 - Due to the Island system having no synchronous connections to the larger North American grid, when there is a sudden loss of large generating units there may be a requirement for some customer's load to be interrupted for short periods to bring generation output equal to customer demand. This automatic action of power system protection, referred to as under frequency load shedding (UFLS), is necessary to ensure the integrity and reliability of system equipment. Under frequency events have typically occurred 5 to 8 times per year on the Island Interconnected System and the resultant customer load interruptions are generally less than 30 minutes. With the activation of the Maritime Link frequency controller during the winter of 2018, UFLS events have occurred less frequently.
 - As of 0800 Hours.
 - Gross output including station service at Holyrood (24.5 MW) and improved NLH hydraulic output due to water levels (35 MW).
 - Gross output from all Island sources (including Note 4).
 - NLH Island Power Purchases include: CBPP Co-Gen, Nalcor Exploits, Rattle Brook, Star Lake, Wind Generation and capacity assistance (when applicable).
 - Adjusted for curtailable load, market activities and the impact of voltage reduction when applicable.
 - Due to limitations inherent in the design of combustion turbines, the output of combustion turbines may be reduced in the event that ambient temperatures exceed the threshold

**Section 3
Island Peak Demand Information
Previous Day Actual Peak and Current Day Forecast Peak**

Tue, Jun 27, 2023	Actual Island Peak Demand ⁹	17:15	887 MW
Wed, Jun 28, 2023	Forecast Island Peak Demand		960 MW

- Notes: 9. Island Demand / LIL / ML Exports (where applicable) is supplied by NLH generation and purchases, plus generation owned and operated by Newfoundland Power and Corner Brook Pulp & Paper (Deer Lake Power, DLP).